

2JWI01

(DATASHEET)

Type	WiFi/Bluetooth antenna
Frequencies	WIFI / BLUETOOTH (2.4 GHz) WIFI (5.1 - 5.9 GHz)
Mounting	Patch Mount
Revision	00



P. Tipul



D. Noble

1. SPECIFICATION

1.1. Electrical Specifications

Frequencies	WIFI / BLUETOOTH (2.4 GHz) WIFI (5.1 - 5.9 GHz)
Impedance	50 Ohms
Polarization	Linear
Gain	2.4GHz: 2dBi / 5GHz: 5dBi
VSWR	<3:1
Operating temperature	-40°C to +85°C

1.2. Connection Specifications

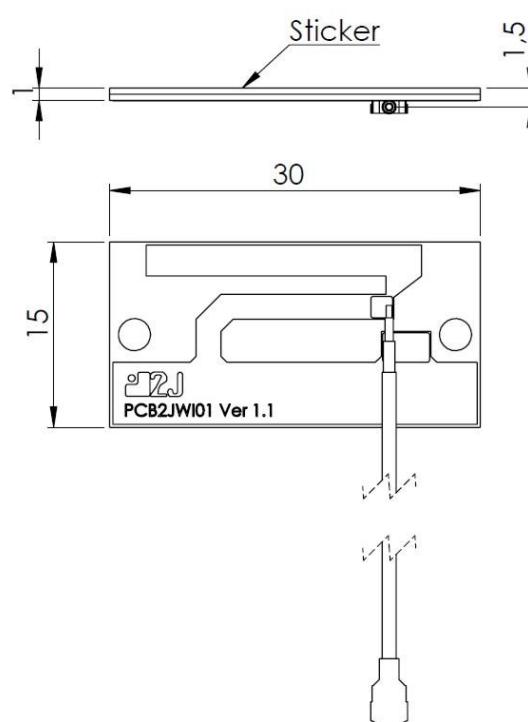
Connector type: U.FL
 Cable: Microcoax 1,13mm
 Cable length: 30 cm

For different cable length and connector type ask our sales team.

1.3. Mechanical Specifications and Dimensions

- Antenna is used for sticking antenna to plastic case

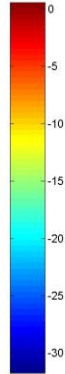
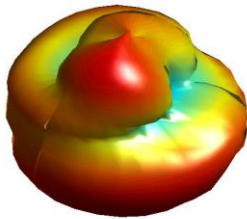
Max. dimensions: 15mm x 1.5mm x 30mm (H x T x W)
 Weight: 1g
 Colour: Black (for different colours please ask our sales team)



2. MEASUREMENT

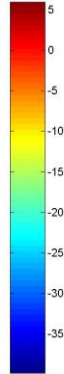
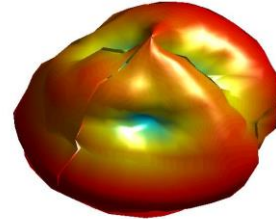
2400MHz

Freq = 2.4002GHz Az= 45 EL= 45



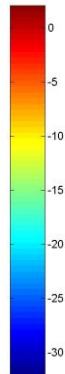
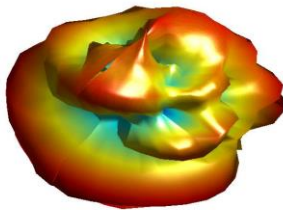
5100MHz

Freq = 5.1842GHz Az= 45 EL= 45



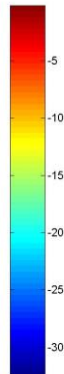
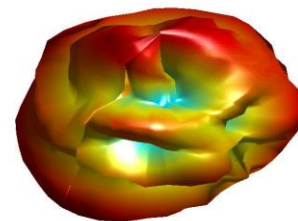
5300MHz

Freq = 5.3147GHz Az= 45 EL= 45



5600MHz

Freq = 5.6192GHz Az= 45 EL= 45



5900MHz

Freq = 5.902GHz Az= 45 EL= 45

